

mathews and associates architects cc



c u r r i c u l u m v i t a e



Mathews and Associates Architects cc, the award winning architectural and design practice, was formed in November 2000. Our practice consists of Pieter J Mathews and associates Liam Purnell and Anton Smit, heading our architectural division, and Andre G Nel heading the graphic design division, supported by our excellent architectural and technical staff. As a young and dynamic company we understand the importance of technology, therefore our office is fully equipped with the latest graphics and architectural 3D software on the market. Our numerous awards bear testimony to our skills and talent. Here with a list of projects undertaken by the professional staff in their current and previous employment capacities.

#### **MATHEWS AND ASSOCIATES ARCHITECTS 2000: Currently**

- Toll plaza
  - Baobab Toll Plaza on the N1 between Louis Trichardt and Musina – 2003  
Award: PIA Merit Award; SAIA Merit Award 2006
  - Diamond Hill Toll Plaza on the N4 between Pretoria and Bronkhorstspruit – 2004  
Award: PIA Merit Award in 2005; SAIA Merit Award 2006  
SA Steel Institute 2005: Overall National Winner.
- Housing
  - Range of upmarket residential houses  
Award: PIA Merit Award in 2005 for House Millar; SAIA Merit Award 2006
  - House Mathews, House Millar and House Clacey was selected for the 2005 Miami Biennial in Florida, USA.
  - House Nixon Dulux Colour award finalist
- Group housing
  - Arnokon – 2000
  - Jan Smit Bouers – 2003
  - Bondsure Consulting – 2003 and 2004
  - One of 10 national architectural firms to be invited for the Melrose Arch residential competition – 2002
  - One of five Pretoria architectural firms short-listed for the UP residential scheme
  - Estate architects – Mjejane, Mpumalanga
  - Estate panel of architects – Southdowns Irene
- Interior
  - Runner-up in association with Tulo Concepts for the MTN Head Office Interior – 2003
  - Rebos TI Brooklyn Mall Pretoria – 2004
  - Brink Bonsma De Bruyn – 2008
  - Enjula mining Company – 2008
- Office
  - New HQ for the North West Provincial Government Department of Public Works
  - SARS regional head office, Rustenburg – 2006
  - EDE farming head office, Middelburg – 2006
  - Kee Enterprises (Pty) (Ltd) Pretoria – 2008
  - Arengo RTB Rustenburg Retail & Office space. Expected completion date 2009
  - Menlyn Maine block F Menlyn Pretoria . Expected completion date 2009
  - Temm International HQ. Expected completion date 2009
- Commercial
  - NTT Toyota dealership Groblersdal – 2008
  - NTT Toyota dealership Whiteriver. Expected completion date 2008
- Education
  - Damelin Campus Rustenburg – 2006
  - Laerskool Pretoria Oos - After care centre. Expected completion date 2009
- Industrial
  - HQ Vitam International. Midrand – 2007
  - Mashova da Maputo. Expected completion date 2009
- Hotels & hospitality
  - Fusion Boutique Hotel, Polokwane. Expected completion date 2009
  - Mjejane Reserve tented camp and Spa .Expected completion date 2008
  - Invited by Rani, a Dubai based company to do a proposal for Santa Carolina Island off the coast of Mozambique.
  - New Brauhaus Brewery & Restaurant complex Rustenburg. Expected completion in 2009
- Airports
  - Mtahta airport refurbishment. Department of Environment and Tourism. Concept and sketchplans

#### **MATHEWS AND GERBER ARCHITECTS: 1995 – 2000**

- Tennant Installation -Lucent Technologies HQ – Bryanston
- Spanish Embassy – Waterkloof, Pretoria
- Various Government Clinics – North West Province
- Head office, Sunlitz International – Hatfield, Pretoria
- Omnimed, medical and radiology unit – Pretoria North
- Pretoria North Medical 24 hour clinic – Pretoria
- Residential houses and projects – more than 61 residential houses. Most of these houses are in the Gauteng vicinity

#### **PREVIOUS EMPLOYMENT - ASSOCIATES**

- Nel Storm & Vennote (P Mathews as partner) -Various schools for the Kwazulu-Natal provincial administration (Project Architect: for Shayina and Maputa Schools as well as the Ubombo circuit offices).
- Holm Jordaan Holm (P Mathews) - Design architect for various residential projects and group housing schemes. Worked closely with Prof. Dieter Holm, world renowned specialist on passive and sustainable design.
- Bruce Gillbreth Architects London (P Mathews) -The centre at Capability Green near Luton Airport/Luton UK - Design of housing project at Waterfront for US clients
- Triad Architects and planners, London (P Mathews) - Queensway Quay/Gibraltar: residential project for the Government of Gibraltar - Part of design team for an office building at 61 Frimley High Street, London.
- Van Rouendal and Bosman Architects, Lichtenburg (P Mathews in training).
- Various projects for the Department of Education and Training in the North West Province.
- Van Eeden & Fourie (A Smit) - Various residential, commercial and government projects.
- Mathews & Gerber - Gerber Architects (L Purnell) -Various residential projects. Internship at Mathews & Gerber architects.



## PIETER J MATHEWS

Pieter J Mathews was born on 24 February 1967 in Lichtenburg in the North West Province as the 4th of five children. He matriculated as head boy from Lichtenburg High School in 1985 and obtained academic colours every year. He obtained his BArch Degree in 1991 at the University of Pretoria, receiving the prestigious Goldfields of SA Scholarship for Architecture, the David Haddon Prize for Office Practice as well as a second place in the Portnet SA Richard's Bay Harbour Development Competition. He also obtained distinctions for design in his second, third and fourth years. He is married, with 2 boys. Student publications: Architecture SA May/June 1990. Author: *Architecture*, published by Visual Books in August 2003, which received the Pretoria Institute for Architecture Presidents Award. In 2007 *Detail Housed* followed, also published by Visual Books. He is currently publishing editor for Construction Primer by Hans Wegelin published by Visual Books/Arcelor Mittal.

### CAREER

In 1989 he completed part of his practical training in London (Bruce Gillbreth & Triad Architects) after which he travelled the globe extensively. His travels included Europe, USA (New York and California), Thailand, Hong Kong and Turkey. At Bruce Gillbreth he was involved with the Centre at Capability Green in Luton and at Triad Architects, Frimley High Street office building as well as a residential project for the government of Gibraltar.

After completing his studies in 1991 he was invited by Prof Dr Dieter Holm (the former head of Architecture at the University of Pretoria) to join their practice: Holm, Jordaan, Holm. At the end of 1994 he was offered a partnership at Nel Storm Architects in Pretoria. With Jacques Gerber as partner they formed Mathews and Gerber Architects from December 1995 to November 2000. Mathews and Associated Architects was formed in November 2000, which since then received numerous accolades and media coverage.

He is also a partner in MG Design Box, an interior design emporium where young creative talent is encouraged. The emporium has received extensive media coverage and is aimed at extending design further than architecture.

In September 2000 he formed part of a study tour to Spain and Morocco, as well as in 2005 to London and Paris, in which year he also attended the Sao Paulo Bienal in Brazil; Amsterdam and Italy followed in 2007.

He was invited as a 3rd year examiner at TUT and (Prof) Masters 5th year design technical at the university of Pretoria 2008

### TELEVISION INTERVIEWS

- |   |   |
|---|---|
| 1999 SABC 2: Art and architecture exhibition Bramley                        | 2005 DSTV Kyknet Dekor: House Mathews                                       |
| 2000 DSTV Kyknet, Kunskafee: House Mathews and House Combrink               | 2006 DSTV Kyknet Dekor: House Bruyns  |
| 2001 SABC 2 Top Billing: House Clacey                                       | 2006 DSTV The Home Channel African Living: House Nieuwoudt                  |
| 2001 DSTV Kyknet, Kunskafee: MG Design Box Interior Design Emporium         | 2006 DSTV Kyknet Dekor : House Bothma                                       |
| 2001 DSTV Kyknet Milieu: House Nixon  | 2006 DSTV Kyknet Dekor : House Wessie and Riëtte                            |
| 2001 DSTV Kyknet Milieu: presenter of plaster techniques for Lafarge cement | 2006 DSTV Kyknet Dekor: House Nieuwoudt                                     |
| 2002 SABC 2 Pasella: The use of wood in architecture                        | 2006 DSTV Kyknet Dekor: House van der Westhuizen                            |
| 2002 SABC 2 Top Billing: House Pelser                                       | 2006 SABC 2 Pasella: House Pienaar and House van Rooyen                     |
| 2002 SABC 2 Pasella: Various houses   | 2006 SABC 3 Top Billing: House Mathews                                      |
| 2003 SABC 3 Top Billing: House Richards                                     | 2007 DSTV Tuine en Tossels: Launch of <i>Detail Housed</i>                  |
| 2003 DSTV Summit TV: <i>Architecture</i> publication                        | 2007 DSTV Kyknet Kwela: Interview <i>Detail Housed</i>                      |
| 2004 SABC 3 Top Billing: House Pietersen                                    | 2008 Weekend live: <i>Detail Housed</i>                                     |
| 2004 SABC 2 Pasella: House Van Der Westhuizen and House Meintjies           | 2008 DSTV Kyknet Kwela: Interview about artwork auctioned for child welfare |
| 2005 DSTV The Home Channel: South African architecture. Various Projects    | 2008 SABC Top Biling House Prinsloo   |

### CONFERENCE TALKS AND PRESENTATIONS

- 2001 Guest speaker: National Architectural Student Congress *Causeway* Pretoria
- 2002 Decorex JHB: SA Garden & Home
- 2003 Guest speaker: Exclusive Books – *Architecture*
- 2005 Guest Speaker: Investec Private Bank, Pretoria
- 2005 Guest Speaker: Tshwane University of Technology
- 2006 The Home Show: South African Institute of Architects, Sandton Convention Centre
- 2006 Guest Speaker: Volksblad Kunstefees, Bloemfontein
- 2007 University of Pretoria: Open School Lecture
- 2007 Judge at Homemakers Fair, Johannesburg
- 2008 Judge at the annual Visi Design Indaba – Designer of the year
- 2008 Lecture at Magi Malan School of interior design
- 2008 Guest Speaker: National Architectural Student Congress *Theatre of Life* Bloemfontein

### INDUSTRIAL, GRAPHIC AND FURNITURE DESIGN

- 2001 Expo at Decorex for Garden & Home – Certificate of Merit Decorex
- 2003 Decorex stand for VISI – Certificate of Merit
- Outdoor furniture collection- published Garden & Home
- 2003 Invited with four other prominent South African designers to design a drinks tray for Absolut Vodka



## ANTON SMIT

Anton was born on 18 November 1975 in Springs, Gauteng, as the second of two children. He matriculated in Rustenburg, Northwest Province. He received his National diploma from the Pretoria Technikon in 1998. He was elected as one of eight students to complete the B Tech degree. He is married, with two children

### CAREER

He completed his practical training at Mathews & Gerber Architects and was invited in November 2000 to join the newly formed Mathews and Associates Architects cc as an associate to head the technical division. He excelled in furniture design and was selected as one of 24 finalists for the Glen Grant/House & Leisure Bright Young Things design competition in 2001.

He successfully completed Professional Practice Exam in 2004 and was registered as a Senior Architects Technologist in 2005. He is currently Senior associate at Mathews and Associates Architects cc.

### PUBLICATIONS

- Illustrator for *Detail Housed*, 2007
- Elle Decoration, Summer, 2000
- Garden & Home, 2001
- House & Leisure, July 2001
- Sarie, 2002
- Chair design
- Chair design
- Chair design
- Table design



## LIAM PURNELL

Liam was born in Ton Bridge, England, as the second of four children. After completion of his schooling in Pretoria, he went to work in London for a year and backpacked extensively around Europe before returning to South Africa to study Architecture at the University of Pretoria. He received his Architecture degree cum laude and was awarded the coveted steel design award in his fifth year. He is currently an associate and design architect at Mathews and Associates Architects cc in Pretoria.

### CAREER

In 1999 he joined Mathews and Gerber Architects to complete architect in training requirement and was invited in November 2002 to join Mathews and Associates Architects cc as design architect & senior associate.

### PUBLICATIONS

- Architectural editor for *Detail Housed*, 2007
- Style, May 2001
- Essentials, February 2003
- VISI Colour, August 2005
- Mens Health Living 20 2008
- TV Interview SABC 3 Top Billing
- House Munroe
- House Bellow
- House Herholdt
- House Fenske
- House Prinsloo





## PAUL EVANS

Paul Evans obtained his architecture degree in 2005 from the University of the Free State. As a student he received a merit award for the annual national Des Baker Student competition. After his third year degree he moved to the UK for two years where he travelled throughout Europe and Australia, before returning to complete his second degree. While studying, he and a fellow student representing South Africa, received an international award for being one of 14 finalists of 150 countries for a worldwide project on relevant sustainability. In 2004 Plascon awarded him with a certificate of excellence for creative use of colour. Paul joined Mathews and Associates cc in 2007 as design architect and is currently, amongst other responsibilities, the companies' representative for Mjejane Game Reserve.



## HEINZ JANZ

Heinz Janz is currently working as technical support on design solutions and Revit software. Heinz joined Mathews and Associates cc in 2005. He has averaged distinctions for his first, second and third years, whilst being the top student for contract documentation in his second year and was one of the first students to score 100% for contract documentation in his third year. He also scored under the top five students for design qualifying him to further his studies in B.Tech applied design. He received his NHdip Architecture in 2008 with distinction from Tswane University of Technology. At the 2008 national Lafarge student design awards, he was chosen as one of the ten finalists and received a special mention for his design.





## ANDRE G NEL

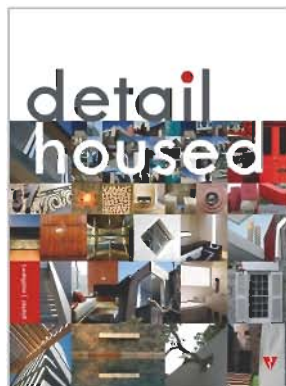
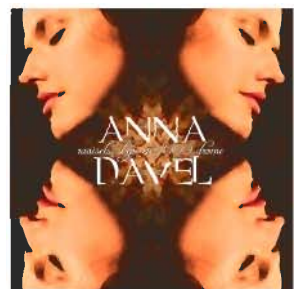
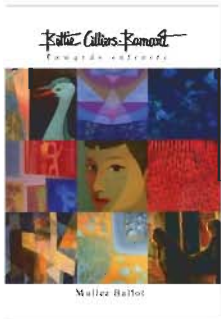
He was born on 3 February 1973 in Pretoria. After obtaining his Bachelors Degree (Noth West University) in Graphic Design and Communication in 1995 he studied various courses at UNISA, the Tshwane University of Technology and Hatfield Business College. He was a graphic designer at Paine Webber in London (1996) and Unisa Press (2000) and he lectured Graphic Design and Illustration at the Design School of Southern Africa (1999). He was appointed as associate and head of the graphic design division at Mathews and Associates Architects cc in 2006.

### AWARDS

- 2003 Second Prize, Unisa Unitech Branding Competition
- 2004 Nominated for Best CD Cover Design: Gypsy (Anna Davel), Geraas Music Awards.
- 2005 Presidents Award: *Architexture*, Pretoria Institute for Architecture.
- 2006 Designed the CD cover for SAMA, Best Afrikaans Adult Contemporary Album: Godinne op die grondpad (Anna Davel)

Mathews and Associates Architects cc graphic design clients include:  
Revlon ,Starsong Production, KKNK, Roots Of Youth, EMI, Lafarge, Visual Books, Arcelormittal, Anna Davel.

Previous work includes Bettie Cilliers-Barnard, Rooi Rose Supermodel (2003), TUKS Aids Centre, Annake de Villiers, Aardklop and Revlon.





LOCAL ARCHITECTURAL AND DECOR MAGAZINES

- Architecture SA
- May/June 1990 – Architecture in Western Transvaal
  - May/June 1996 – House Mathews and House Nieuwoudt
  - August/September 2005 – N4 Diamond Hill and Baobab Toll Plaza
  - May/June 2009 – Laerskool Pretoria Oos
- Architexture
- Visual Books 2003
- Beeld
- March 2003 – Plus
  - July 2005 – Plus – N4 Diamond Hill Toll Plaza
  - Plus supplement 23 June 2007 Launch of Detail Housed
- By The Way
- Summer 2005/2006 – Diamond Hill Toll Plaza
- Burger (Die)
- 14 February 2008- Interview on Detail Housed
- Business Day
- October 2002 – Interview
- Colour
- 2007 – Article on colour by Andrea Vinassa
- Concrete Trends
- September 2000 – House Olivier
  - October 2002 – For the love of concrete
- Condé Nast House & Garden
- May 2001 – Summit House and House Bruyns
- Contemporary South African Architecture in a Landscape of Transition
- House Millar
  - Baobab Toll Plaza
  - Diamond Hill Toll Plaza
- DEKAT
- Februarie 1996 – House Mathews (1)
  - September 1998 – Pretoria Architects
  - Julie 1998 – House Mathews (2)
  - Spring 2002 – Article dinksketse
  - Winter 2003 – Architexture
  - October 2007 – In finest detail
- Detail Housed
- May 2007
- Die Wêreld
- 22 May 2005 – Waarom lelik verdra?
- Designing Ways
- Feb 2007 – Living in the Sun: House Meintjies
- Digest of South African Architecture
- 2000 – House Mathews (2)
  - 2001 – House Combrink
  - 2005-2006 – N4 Diamond Hill Toll Plaza & Hous Millar.
  - 2006-2007 – Damelin Campus - Rustenburg
- Elle Decoration
- Spring 2001 – House Nixon
  - Spring issue 2007 – Bathrooms
- Engineering News
- August 2005 – N4 Diamond Hill Plaza
- Essentials Magazine
- February 2004 – House Bellew
- Fine Living
- Autumn 2004 – House Pietersen
- Food & Home
- February 2005 – Toll Plaza N4
  - September 2005 – House Mathews (3)
- Garden & Home
- January 1998 – House Louw
  - December 1998 – House Mathews (2)
  - June 1999 – House Nieuwoudt
  - October 1999 – Pull out plan (2) and Starter House
  - January 2000 – Summit House swimming pool
  - March 2000 – House Sheard
  - July 2001 – House Muller bathroom
  - August 2001 – Garden & Home Decorex stand
  - October 2002 – Interior make-over
  - November 2002 – House Sheard
  - February 2005 – House Bothma
  - February 2005 – Pull-out plan (2)
  - 2005 – House van der Westhuizen, Woodhill
  - 2005 – House Meintjies, Silverlakes
  - 2006 – September pull-out plan holiday home
  - April 2007 – Profile on Pieter J Mathews
  - April 2009 – House Pelser





- Galvanizing Today 35  
Habitat  
Home Owner
- Volume 5, issue 2 – Interview
  - July/August 1998 – Lucent Technologies office interior
  - November/December 2004 – Bondsure, House Willmans
  - May/June 2005 – Kitchen, House Meintjies
- House & Leisure
- March 1998 – House Louw
  - January 1999 – Building on a budget
  - March 1999 – House Mathews (2)
  - September 1999 – House Combrink
  - May 2000 – House Crabtree
  - July 2000 – House Smit
  - July 2001 – House Clacey
  - April 2002 – House Muller
  - April 2002 – House Pelser
  - July 2009 - House Prinsloo
  - August 2009 - Kee Enterprises
- INSIG
- September 2006 – Argitektuur
- Leading Architecture
- September 2006 – House Millar, Nelspruit
  - January 2008 – Profile on Pieter J Mathews
- Lifestyle Choice  
Standard Bank 2005
- Consulting Architects
- Manwees
- September 2006 – Profile on Pieter J Mathews
- Marie Claire
- August 2022 – House Aucamp
- Men's Health  
Men's Health Living
- June 1999 – Fireplaces
  - December 2008 – House Fenske
- My week
- 5 June 2008 – Interview with Pieter J Mathews
- One Hundred Buildings:  
Ten Years of Democracy  
(to be published 2009)
- Baobab Tollgate
  - Diamond Hill Tollgate
- Pretoria News
- 1 February 2007 – Tollplazas designed with pizzazz
- Rapport Leef
- October 2002 – House van Straaten
- Rooi Rose
- 20 Januarie 1999 – Farmhouse Heidelberg
  - 28 April 1999 – House Slabbert
  - 10 November 1999 – House Mathews (2)
  - 15 Maart 2000 – Melanie's coffee shop interior
  - House Richards, Woodhill
- SA interior Design
- October/November 1998 – Lucent Technologies office interior
  - June/July 1999 – Sunglitz hair salon, interior
  - August/September 2000 – interviews with SA's top architects
  - February/March 2002 – House Combrink
- Sarie
- House Mathews (1) and House Nieuwoudt
  - September 2002 – House Muller
- Style
- May 2001 – House Monroe
  - Décor 2001 – Trendsetters
- Top Billing Magazine
- December 2006 – Bathroom, House Mathews
- Top Huis
- March 2005 - House Pretorius & Richards
  - August/September 2005 – House Riana Pietersen]
  - April/May 2006 – House van der Vyfer
- Tuin Paleis
- April/May 2004 – House Pelser
  - November 2004 – House Kruger
  - March 2006 – House Pretorius
  - December 2007 – Five Contemporary Architects
  - April 2008 – Profile and interview with Pieter J Mathews
- Tuis/ Home
- January 2008 – Entrances
- VISI
- Winter 2000 – Summit House
  - Spring 2002 – House Armstrong
  - Spring 2005 – House Millar, Nelspruit
  - Summer 2006 – House Nataniel and Interview: Beach houses
  - Autumn 2006 – Diamond Hill and Baobab Toll Plazas and interview on alterations
  - October 2006 – Lafarge pop-up
- VISI Colour 2005/6
- September 2005 – Various Houses
  - September 2007 – House Nieuwoudt and a view on Colour
  - 2009 - Interview with Pieter Mathews
- Volksblad
- 10 Junie 2006 – Bekendes se huise

INTERNATIONAL PUBLICATIONS

- Greece Marie Clare Living – DEMBPIO 2001
- France Maison (le Journal de la) – October 2001





Dulux Colour Awards 2002 – Finalist

Merit Award Mpumalanga Institute Of Architects – House Millar, Nelspruit 2005

Merit Award Pretoria Institute For Architects – N4 Diamond Hill Toll Plaza , Pretoria 2005, in association with K Thomashoff.

Presidents Award PIA – *Architecture* 2005

Limpopo Institute Of Architects – Baobab Toll Plaza 2005

Overall Winner 2005 – South African Institute For Steel Construction

Selected for Exhibition Miami + Beach Biennial in 2005, Florida, USA – House Millar, House Mathews and House Clacey

*Architecture* received excellent reviews in more than 28 publications and newspapers including Image & Text: Habitat, Business Day, Femina, People, Interior Design, Style, Noordwester, Designing Ways, Garden & Home, Rapport Leef, Beeld: Tshwane, Beeld Plus, Sunday Times, Finansies & Tegniek, House & Leisure, DEKAT, Visi, Star, Pretoria News Interval, Conde Nast: House & Garden, Walls & Roofs, Leading Architecture, Flooring Guide, Home Owner, Tuin Paleis, Tuis en Top Huis.

South African Institute of Architects Merit Award 2006 – House Millar

South African Institute of Architects Merit Award 2006 – Diamond Hill Tollgate

South African Institute of Architects Merit Award 2006 – Baobab Tollgate



#### POSTAL ADDRESS

PO Box 2676  
Brooklyn Square 0075  
Pretoria  
0145  
Republic of South Africa

Tel 086 111 6222  
From outside South Africa +27 12 346 0772

Fax +27 12 346 0835

Pieter Mathews 083 255 9622  
+27 83 255 9622  
E-mail maaa@mweb.co.za

Individual e-mails pieter@maaa.co.za  
liam@maaa.co.za  
anton@maaa.co.za  
paul@maaa.co.za  
nick@maaa.co.za  
heinz@maaa.co.za

Graphic design department andre@maaa.co.za

Website:

#### PHYSICAL ADDRESS

First Floor  
467 Fehrsen Street  
Corner of Muckleneuk Street and Fehrsen Street  
Entrance Muckleneuk Street  
New Muckleneuk  
Pretoria  
Republic of South Africa

GPS coordinates S 25 46.133 E 28 14.043

